

# Category 1

## Monolithic Formwork

--Aluminum monolithic formwork system is a new integrated forming and shoring system.

—:



### Aluminum Panel System-Tie rod Type

- It is a flexible solution for monolithic casting or two stage casting of wall, beam, slab and staircase.
- The panels are reinforced by tie rod and wing nut, which can make sure good verticality of wall.
- The smooth concrete surface finish after stripping eliminates the need of costly plastering.

<b>Brand Name</b>	Sainty Forms	<b>Place of Origin</b>	Qingdao, China	<b>Certificate</b>	ISO9001;CE;SGS
<b>Material</b>	Aluminum Alloy 6061-T6	<b>Aluminum Thickness</b>	4mm	<b>Side Rail Thickness</b>	8mm
<b>Extrusion Profile</b>	Yes	<b>Weight</b>	25kg/sqm	<b>Reuse Times</b>	> 300 times
<b>Surface</b>	Special Coating	<b>Panel Width</b>	500mm	<b>Panel Length</b>	Customized
<b>Feature</b>	Monolithic casting	<b>Early Stripping</b>	Yes	<b>Application</b>	House, Appartment
<b>Reshore</b>	No Need	<b>Plastering</b>	No Need	<b>Plywood</b>	No Need
<b>Connection Method</b>	Use tie rod and wing nut to reinforce the panels				

# Advantages

Light Weight	Flexible Operation	More Usage times
<p>Panel material is aluminum alloy 6061-T6. Weight 25kg/m<sup>2</sup> makes manpower carrying possible.</p>	<p>The panel system can be lifted by tower crane in whole, or dismantled and installed by labors. It can realize casting of wall, beam, slab and staircase monolithically or in two stage casting.</p>	<p>The panel is made of extrusion profiles with high strength. It is not easily to be deformed by external force or water erosion. The panel can be used more than 300 times with appropriate usage and maintenance.</p>
Better Concrete Surface	Improve Efficiency	Save Labor Cost
<p>Main panel width 500mm makes the concrete surface more smooth and fewer joints. The verticality is better than concrete surface made by plywood or steel formworks.</p>	<p>1.Early-dismantling application improves the form cycle and save cost for users. 2.No need re-shore.</p>	<p>1.Assembled easily with only pins &amp; wedges, tie rods &amp; wing nuts. Labors can finish the installation and dismantling by hammers. 2.No need to plaster the concrete surface after concrete pouring.</p>

# Scene

## Walls & Column Forms

The panel system can be used to form large walls & columns where flat ties are not practical or not preferred. To ensure the strength of the system, steel waler, tie rod & wing nut are used.



## Beam Forms

The beam formwork is designed with early-dismantling application. The shoring props work for back propping.



## Slab Forms

Main slab panel size 500x1200mm. Strength and easy handling are both satisfied. The slab is designed with decking beam, which is easier to applicate early-dismantling application.



## Stair Forms

Stair formworks are designed to allow walls and stairs to be poured concrete at the same time. Staircase forms without top covers can realize even faster pouring.



二.



# Aluminum Panel System-Flat Tie Type

- Aluminum panel system is a new integrated forming and shoring system.
- It is a flexible solution for monolithic casting or two stage casting of wall, beam, slab and staircase.
- The panels are reinforced by flat tie, pin & wedge, which can make sure good flatness of wall.
- The smooth concrete surface finish after stripping eliminates the need of costly plastering.



<b>Brand Name</b>	Sainty Forms	<b>Place of Origin</b>	Qingdao, China	<b>Certificate</b>	ISO9001;CE;SGS
<b>Material</b>	Aluminum Alloy 6061-T6	<b>Aluminum Thickness</b>	4mm	<b>Side Rail Thickness</b>	8mm
<b>Extrusion Profile</b>	Yes	<b>Weight</b>	25kg/sqm	<b>Reuse Times</b>	> 300 times
<b>Surface</b>	Special Coating	<b>Panel Width</b>	500mm	<b>Panel Length</b>	Customized
<b>Feature</b>	Monolithic casting	<b>Early Stripping</b>	Yes	<b>Application</b>	House, Apartment
<b>Reshore</b>	No Need	<b>Plastering</b>	No Need	<b>Plywood</b>	No Need
<b>Connection Method</b>		Use tie rod and wing nut to reinforce the panels			



## Advantages

Light Weight	Flexible Operation	More Usage times
<p>Panel material is aluminum alloy 6061-T6.</p> <p>Weight 25kg/m2 makes manpower carrying possible.</p>	<p>Most panel sizes are standard and can be used versatile. It can realize casting of wall, beam, slab and staircase monolithically or in two stage casting.</p>	<p>The panel is made of extrusion profiles with high strength. It is not easily to be deformed by external force or water erosion. The panel can be used more than 300 times with appropriate usage and maintenance.</p>
Better Concrete Surface	Improve Efficiency	Save Labor Cost
<p>Main panel width 500mm makes the concrete surface more smooth and fewer joints. The verticality is better than concrete surface made by plywood or steel formworks.</p>	<p>1.Early-dismantling application improves the form cycle and save cost for users.</p> <p>2.No need re-shore.</p>	<p>1.Assembled easily with only pins &amp; wedges, tie rods &amp; wing nuts. Labors can finish the installation and dismantling by hammers.</p> <p>2.No need to plaster the concrete surface after concrete pouring.</p>

## Scene

Walls & Column Forms	Beam Forms
<p>The panel system can be used to form large walls &amp; small columns. The wall flatness is better and no need plaster. For large columns, tie rod type panel system can be used.</p>	<p>The beam formwork is designed with early-dismantling application. The shoring props work for back propping.</p>
	

## Slab Forms

Main slab panel size 500x1200mm. Strength and easy handling are both satisfied. The slab is designed with decking beam, which is easier to apply early-dismantling application.

## Stair Forms

Stair formworks are designed to allow walls and stairs to be poured concrete at the same time. Staircase forms without top covers can realize even faster pouring.



## Category 2

### Slab Formwork System

Sainty Forms - Professional Monolithic Formwork Manufacturer!





## Modular Slab Formwork System

- Modular slab formwork system is uniquely designed for faster erection and stripping.
- Modular panel 1.2\*1.8m&1.2\*1.5m can be erected by 3 men without the tower crane.
- Early stripping drop head with shoring props can be left to support the slab after stripping the slab modular panels.

# Advantages

Light Weight	Cost Saving	Improve Efficiency
<p>Aluminum frame for the formwork panel is made of aluminum alloy 6061-T6. It is much lighter weight compared with steel formwork.</p>	<ol style="list-style-type: none"> <li>1. Assembled easily with shoring prop, drop head and panels.</li> <li>2. With early Stripping application, the user only need buy one floor of formwork panels and 2 floors of shoring prop, but can finish two floors with cycle time 7-10 days per floor.</li> </ol>	<ol style="list-style-type: none"> <li>1. Large forming surface improve construction speed.</li> <li>2. 3 men can assemble and strip the formwork without using tower crane.</li> <li>3. The early Stripping application will reduce the transit time of all the formwork panels and steel accessories.</li> </ol>

## Scene

Erection & Stripping	Adjustable Height
<p>Modular panel size 1.2*1.8m &amp; 1.2*1.5m makes the typical forming area 2.16 m<sup>2</sup> &amp; 1.8 m<sup>2</sup>. Easily and fast erection for 3 men. Reverse procedure can be used for stripping.</p>	<p>Thanks to adjustable height of shoring props, the system height can be adjusted based on requirement.</p>
	



## Aluminum Table Form System

- Aluminum flying table form system is a very efficient solution for the forming of large slab areas.
- It is mainly used in frame structure buildings with open facades.
- The table form is assembled only once and can be re-used floor-by-floor, avoiding the need for costly dismantling and re-assemble of the forms during the construction of each floor.

<b>Brand Name</b>	Sainty Forms	<b>Place of Origin</b>	Qingdao, China	<b>Certificate</b>	ISO9001;CE;SGS
<b>Material</b>	Aluminum Alloy 6061-T6	<b>Extrusion Profile</b>	Yes	<b>Weight</b>	25kg/sqm
<b>Truss Height</b>	Adjustable	<b>Drop Beam</b>	With/Without is ok	<b>Plywood</b>	Need
<b>Wholly Moving &amp; Lifting</b>	Yes	<b>Usage</b>	Slab/Ceiling casting	<b>Application</b>	Frame structure building

### Advantages

#### Light Weight

Material is aluminum alloy 6061-T6 for main components such as aluminum beam, chord, diagonal brace and extension staff.

#### Flexible Operation

Aluminum table form can be designed for up to 12 meters in length with only two trusses. Any larger size can be done by adding truss sections. Working height 2.2 meter to 3.9 meter can be done with one table form height. Higher working height can be done by using two table forms or using scaffolding supports.



## Save Labor Cost

## Improve Efficiency

1. Assembled easily with only bolts, nuts and pins.
2. No need for costly dismantling and re-assembly of the table forms during the construction of each floor.

1. Very large forming surface improve construction speed.
2. Can be moved within one floor using lowering device, moving glide and moving trolley.
3. Can be moved to next floor as a whole set by tower crane quickly and safely .

## Scene

### Flexible Length and Height Combination

### Flat Slab and Drop Beam Versatile

Longer table forms can be done by adding truss sections. Higher working height can be done by using two table forms or using scaffolding supports.

Aluminum table form can be designed to form any drop beams in the slab, and the down stand edge beam.



### Lowering of Truss

### Moving of Truss

Can be lowered down from the slab with the lowering device supporting the weight.

Aluminum table form can be moved around easily with moving devices.





## Flying & Lifting of Table Form

Aluminum table form can be flied out and lifted to next floor with tower crane.



三、






## Aluminum Shoring Props System with Early Stripping

- Aluminum 12K with Early Stripping System provides simple but cost-effective solution for flat slab or slab with drop beams.
- This system can offer the early stripping. After pouring concrete, just remove the aluminium beams to next casting area and keep the shoring prop to support the slab, so this is an economical solution for the user.

<b>Brand Name</b>	Sainty Forms	<b>Place of Origin</b>	Qingdao, China	<b>Certificate</b>	ISO9001;CE;SGS
<b>Material</b>	Aluminum Alloy 6061-T6; Steel	<b>Usage</b>	Slab/Ceiling casting	<b>Plywood</b>	Need
<b>Early Stripping Application</b>		Yes	<b>Components</b>	Drop Head, Aluminum Beam Joist, Aluminum Beam Ledger, Adjustable Shoring Prop, U-Head Assembly, Tie-Pod Assembly, Plywood	

<b>Advantages</b>		
<b>Light Weight</b>	<b>Adaptability to All Slab Types</b>	<b>Material Versatile</b>
Beam material is aluminum alloy 6061-T6 , whose weight is lighter compared with wooden beam or steel beam.	The 12K system can complete any required slab layout by cutting the aluminum beam and plywood.	The aluminum beam and plywood are versatile materials which can be used in other formwork systems.
<b>Improve Efficiency</b>	<b>Cost Effective</b>	
The early Stripping application will reduce the transit time of all aluminum beams and the steel accessories. It will improve the construction efficiency.	With early Stripping application, the user only need buy one floor of aluminum beam and 2 floors of shoring prop, but can finish two floors with cycle time 7-10 days per floor.	

<b>Scene</b>		
<b>Early Stripping Application</b>	<b>Flexible Length</b>	<b>Adjustable Height</b>
<p>After pouring concrete, just remove the aluminium beams to next casting area and keep the shoring prop to support the slab, so this is an economical solution for the user.</p>	<p>The 12K system is the fast, versatile floor-slab formwork for any required slab layout. Users can get desired length by cutting the aluminum beam and plywood.</p>	<p>Thanks to adjustable height of shoring props, the 12K system height can be adjusted based on requirement. Aluminum Shoring Props System with Early Stripping.</p>
		

四、



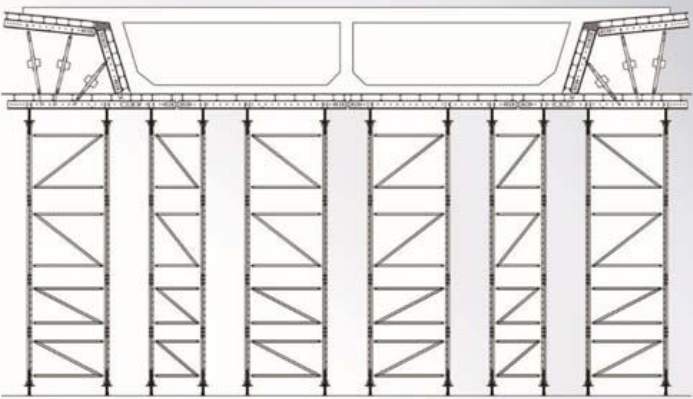
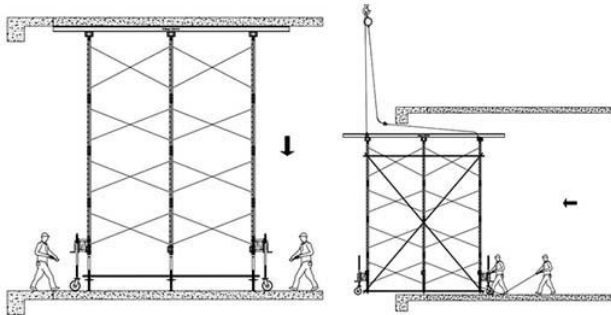
## **Aluminum Frame Shoring System**

- Shoring frame system is with high capacity and flexibility.
- Unique design for rapid stripping and erection.
- It can be erected by 2 men with no help from a crane.

## Advantages

Light Weight	Save Labor Cost	Improve Efficiency
Material is aluminum alloy 6061-T6 for main components such as beam, diagonal brace and extension staff.	<ol style="list-style-type: none"> <li>1. Assembled easily with only bolts, nuts and pins.</li> <li>2. No need for costly dismantling and re-assemble of the forms during the construction of each floor.</li> </ol>	<ol style="list-style-type: none"> <li>1. Very large forming surface improve construction speed.</li> <li>2. Can be moved within one floor using lowering device, moving glide and moving trolley.</li> <li>3. Can be moved to next floor as a whole set by tower crane quickly and safely .</li> </ol>

## Scene

Highly Efficient in Different Types of Civil Works	Moving and Lifting
Construction of viaduct, overpass junctions, light rails, bridges, channels, water works, power plant projects, office building, shopping mall projects, etc.	For repetitive use, frame shoring system can be assembled into complete table-forms which can be moved from one location to the other using the shifting trolley or to the edge of the building where it is lifted to the next floor.
	





## Aluminum Shoring Props System

- The Aluminum Shoring Props System also called 12K system provides simple but effective beam and slab decking for conventional casting works.
- It can be assembly and dismantled easily for fast operations for various concrete slab design structures. Minimum number of manpower can be used but optimum productivity can be achieved.

<b>Brand Name</b>	Sainty Forms	<b>Place of Origin</b>	Qingdao, China	<b>Certificate</b>	ISO9001;CE;SGS
<b>Material</b>	Aluminum Alloy 6061-T6; Steel	<b>Usage</b>	Slab/Ceiling casting	<b>Plywood</b>	Need
<b>Components</b>	Aluminum Beam Joist, Aluminum Beam Ledger, Adjustable Shoring Prop, U-Head Assembly, Tri-Pod Assembly, Plywood				

## Advantages

### Light Weight

Beam material is aluminum alloy 6061-T6 , whose weight is lighter compared with wooden beam or steel beam.

### Cost Effective

The main components of the 12K system are aluminum beam, steel shoring prop, U-head, Tri-pod and plywood.

### Adaptability to All Slab Types

The 12K system can complete any required slab layout by cutting the aluminum beam and plywood.

### Material Versatile

The aluminum beam and plywood are versatile materials which can be used in other formwork systems.

# Scene

## Flexible Length

The 12K system is the fast, versatile floor-slab formwork for any required slab layout. Users can get desired length by cutting the aluminum beam and plywood.

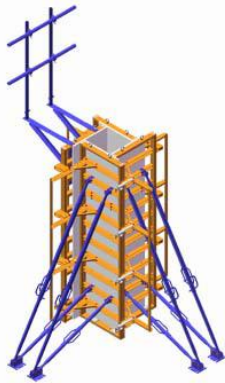


## Adjustable Height

Thanks to adjustable height of shoring props, the 12K system height can be adjusted based on requirement.



# Category 3



## Foldable Column System

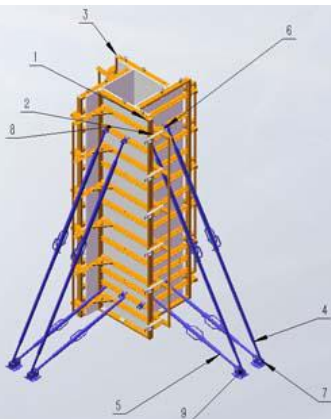
- Sainty Foldable Column System is an advanced column forming systems, which is foldable and adjustable.
- The column formwork can be lifted as a whole with turnbuckles by crane or moved horizontally on moving trolley.
- Sainty Foldable columns are equipped with 20mm PVC foam board, as the PVC foam board is screwed at the rear of column frame, so highly demanding concrete finish can be realized with Sainty Foldable Column System.

<b>Brand Name</b>	Sainty Forms	<b>Place of Origin</b>	Qingdao, China	<b>Certificate</b>	ISO9001;CE;SGS
<b>Material</b>	Steel; PVC Foam Board	<b>Usage</b>	Column	<b>Size Adjustable</b>	Yes; Modulus 50mm
<b>Standard Panel Height</b>	2700mm, 3600mm	<b>Extension Panel Height</b>	600mm, 1200mm	<b>Wholly Lifting</b>	Yes
<b>Column Size Ranges</b>	200-600mm, 500-900mm, 800-1200mm	<b>Components</b>	PVC Foam Board, Lock Assembly, Double Shoe Adaptor, Single Shoe Adaptor, Short Turnbuckle, Long Turnbuckle, Slided Bottom Sheet		

### Advantages

1. Sections adjustable in 50mm increments.	5. Time-saving shuttering and striking.
2. Fast moving, easy to horizontally move on moving trolley.	6. PVC foam board are fire proof & weather proof.
3. Foldable design enable this formwork system convenient to stack and transport.	7. No small parts loss because of wholly moving.
4. The wholly stripping can improve the lifetime of PVC foam board and plywood.	8. Excellent concrete surface can be obtained.
9. Height extension is done by adding or reducing panels at the bottom and connecting them with column clamp.	

### System Main Parts



1. Column Panel
2. Lock Assembly
3. Double Shoe Adaptor
4. Single Shoe Adaptor
5. Short Turnbuckle
6. Long Turnbuckle
7. Slided Bottom Sheet



## Aluminum Column Panel Form System

- The adjustable aluminium column panels increment: 50mm
- Erection of any column size with ease and simplicity.
- Panels are delivered according to the required height and dimensions ready for immediate use.

### Advantages

#### Light Weight

Material: Aluminum alloy 6061-T6 for main components, 22kg/m<sup>2</sup> makes manpower carrying possible.

#### Flexible Sizes

The adjustable alu column panels with increment every 50mm  
Guarantees the erection of any column size with ease and simplicity.

#### Save Labor Cost

Assembled easily with only tie bolts and wing nut, no need to hire skilled workers.



# Scene

## Extension Parts

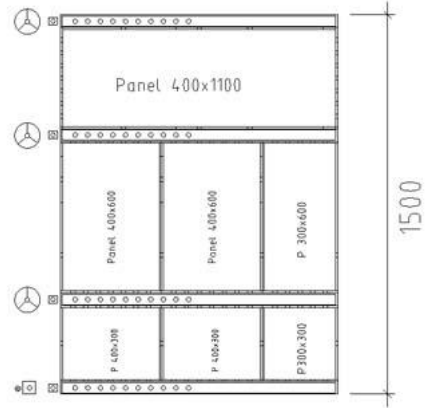
Column of any size can be adjusted by adding or subtracting standard panels vertically or horizontally to fit other column dimensions.



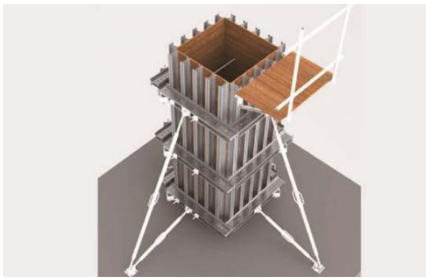
Column Panel 300X300



Column Panel 300X600



三、



## Aluminum Column Form System

- Special steel and aluminum alloy materials for easy assemble and work ability for fast operation at site.
- Main components : 140-Aluminium H Beam, Aluminum strong back , the steel tie-rod
- This column system could cast all kinds of columns and gang wall.

# Advantages

## Save Labor Cost

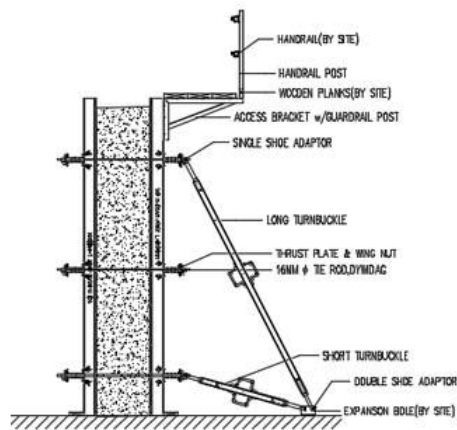
Customers could use tower crane to lift the whole system and no need to install and dismantle again and again. This improves the efficiency and saves the labor cost.

## Improve Efficiency

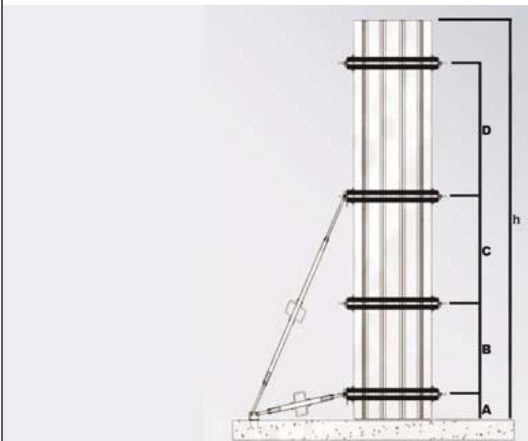
When countered different sizes of the walls or columns, customers just cut the plywood accordingly and then install the aluminum strong back themselves without causing any wastage.

# Scene

## Main parts

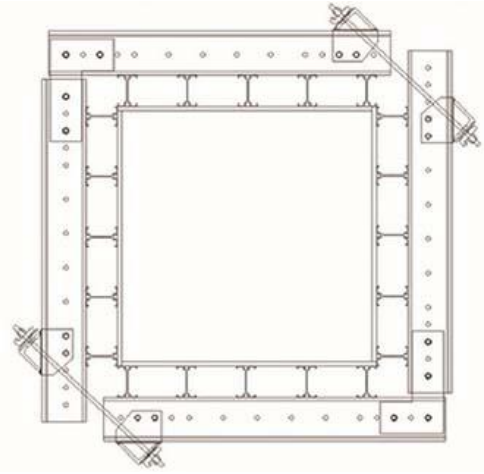


## Technical Data



Column Dimension (Centimeter)		60*60	70*70	80*80	90*90	100*100
Number of H-beams per Side		3	3	4	4	4
Column Height (Meter)		Spacing Between Walers (Centimeter)				
4.5	D	140	140	140	140	140
	C	120	120	120	120	120
	B	100	100	100	100	100
	A	35	35	35	35	35
4	D	120	120	120	120	120
	C	110	110	110	110	110
	B	100	100	100	100	100
	A	35	35	35	35	35
3.5	C	150	150	150	150	150
	B	110	110	110	110	110
	A	35	35	35	35	35
3	C	120	120	120	120	120
	B	120	120	120	120	120
	A	35	35	35	35	35
2.5	B	135	135	135	135	135
	A	40	40	40	40	40

## Material List Per Layer of Waler



Description	Column Dimension(Centimeter)				
	60*60	70*70	80*80	90*90	100*100
Double Strongback Channel Waler L=850mm	2				
Double Strongback Channel Waler L=950mm	2	2			
Double Strongback Channel Waler L=1050mm		2	2		
Double Strongback Channel Waler L=1150mm			2	2	
Double Strongback Channel Waler L=1250mm				2	2
Double Strongback Channel Waler L=1350mm					2
Corner Splice Plate	2	2	2	2	2
Corner Tie Bearing Assembly	4	4	4	4	4
Round Pin $\phi$ 20mm	12	12	12	12	12
A Clamp Assembly	24	24	32	32	32
Tie Rod $\phi$ 16mm(L=800mm)	2	2	2	2	2
Wing Nut with Thrust Plate	4	4	4	4	4



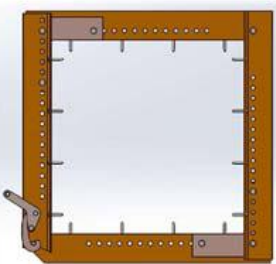
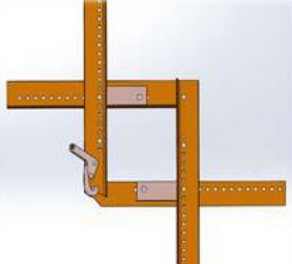
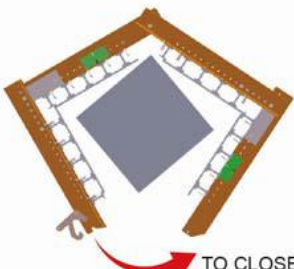
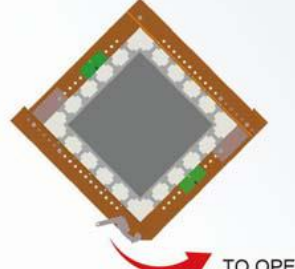
## Fast Lock Column System

- Fast Lock Column System-One of the fastest column forming systems; could be quick moved to the next job site wholly.
- The column system could be accommodate 4 column size ranges:200-450mm, 450-750mm, 1050-1350mm. · The system could be horizontally moved by 2 workers to the next working site without tower crane.

### Advantages

Flexible Sizes	Save Labor Cost	PVC Board Application
Sections of columns can be adjusted in increments of 50mm.	One step to strip or shutter the form by opening or closing the hook assembly.	1. The wholly stripping can improve the lifetime of PVC foam board Plywood. 2. PVC H beam and PVC foam board are fire proof&weather proof. 3. Excellent concrete surface after stripping formwork because of low adhesive force of PVC foam board.

### Scene

Adjustable Steel Angles Assembly	Adjustable Steel Angles Assembly
Size Adjustable	Hook Assembly
 <p>Maximum Size</p>  <p>Minimum Size</p>	 <p>TO CLOSE</p>  <p>TO OPEN</p>



# Stripping Procedure

1. Open the hook assembly, strip from away from the concrete surface by retracting the turnbuckle props.
2. Lift the column formwork wholly and move to next working site.



五、



## Plywood Round Column Form System

- Plywood round column formwork, a kind of integrated concrete pouring formwork, executes the best and latest standard GB17656-2008、GB153-2009.
- Two pieces of half-round formwork to joint into one column, and use the steel fixed belt to fix the two formworks steady.Easy to install and fix.
- It can be designed to pour some special-shaped columns and architectures.

# Advantages

## Light Weight

This products is made of wood, poplar. Lighter weight than steel.

## Save Construction Cost

1. High quality film protect the formwork surface from the corrosion and makes the formwork durable, improves the flatness of the concrete surface and makes the concrete surface save the second time plastering.
2. It can save 50% material cost than traditional steel column formwork and 60% labor cost.

# Scene

## Widely Used for Special Concrete Structure

It could be used in round column concrete pouring, elliptical column concrete pouring and other special-shaped construction concrete pouring. For some special-shaped and abnormal columns or buildings, it can be specially designed to meet customer's requirements.



## Special Timber Connection to Prevent Leaking

The sides of plywood round column formwork is concave-convex, so when two formworks jointing, the gap is very close, and also the formwork is fixed by the steel belt, so the formwork is excellent in preventing the concrete leaking.



## Easy to Maintain

Plywood column formwork could be preassemble to transport for fast processing.



## Category 4

### Climbing Formwork System

**Sainty Forms - Professional Monolithic Formwork Manufacturer!**



## Automatic Climbing System

- Automatic Climbing System also called Self-climbing core wall system increases jobsite production and reduces labor costs.
- The entire core wall formwork is hydraulically raised independent of the tower crane.
- At the push of a button, all platforms, along with interior and exterior formwork for an entire floor is raised in one single cylinder stroke.



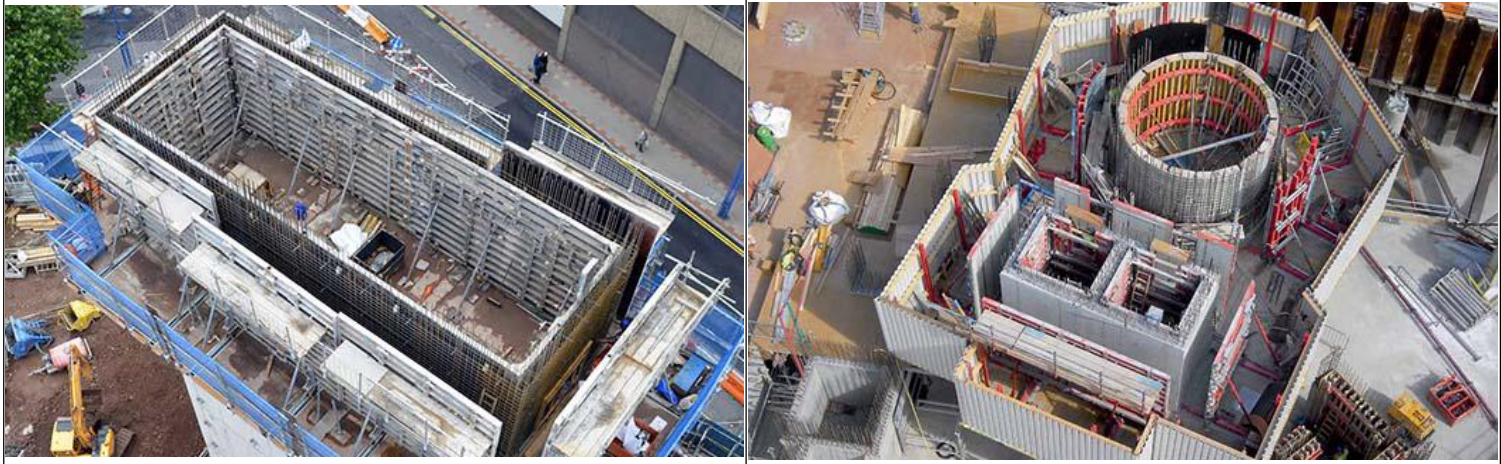
# Advantages

Improve Construction Speed	Maximized efficiencies	High Safety Standard
<ul style="list-style-type: none"><li>· A single stroke cylinder raises all interior and exterior core formwork at the push of a button.</li><li>· All Formwork, working platforms and concrete placing boom for an entire level can be raised completely independent of the crane.</li></ul>	<ul style="list-style-type: none"><li>· Reduce labor costs</li><li>· Working points are reduced to a few simple steps.</li><li>· All formwork is suspended from a high capacity superstructure reducing job site crane pick requirements.</li></ul>	<ul style="list-style-type: none"><li>· Self-climbing system is provided with Protection Screen for the working floor and three floors below.</li><li>· Integral ladders and manholes provide safe access routes between the working platforms.</li></ul>

# Scene

## Suitable Buildings

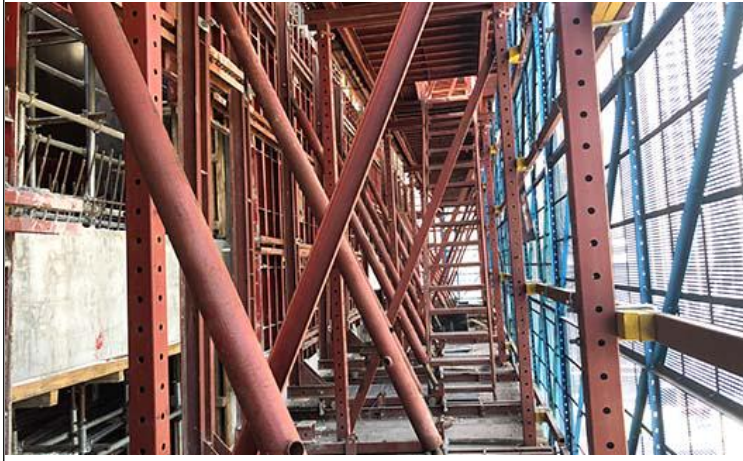
Self-climbing system is the perfect way of forming high-rise cores, bridge piers and pylons.





# Customized Loading Capacity

The loading capacity of the brackets are designed specified for each construction project. It can also be designed to lift concrete placing booms.



二、



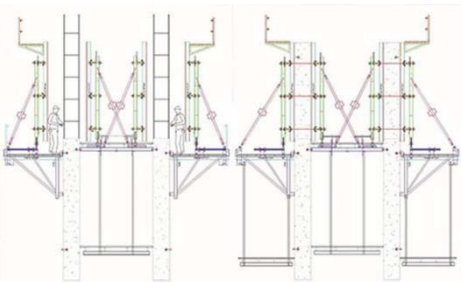
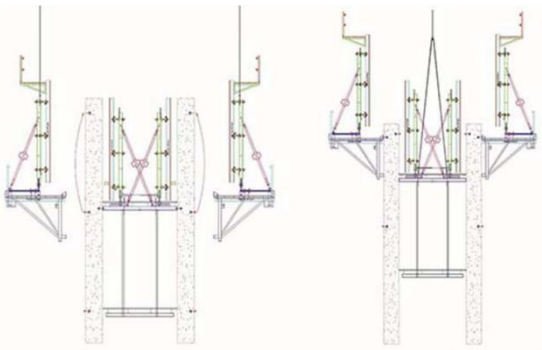
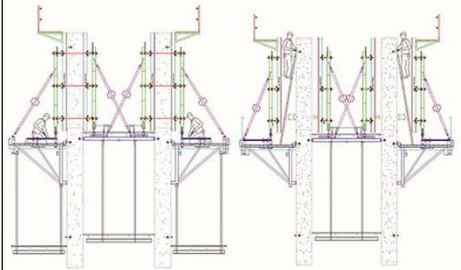
## Tower Crane Lifted Climbing System

- Tower Crane Lifted Climbing System is mainly used in the construction of concrete wall with non-slab, core wall or dam, concrete breast wall, cooling tower, tunnel and underground liner structure, etc.
- For wall formwork construction, set the main bracket with the anchor firstly, then set other parts.
- The tie rod will bear all the concrete pressure during casting.

# Advantages

Flexible Sizes	Save Labor Cost	Improve Efficiency
<p>When countered different sizes of the walls, customers just cut the plywood accordingly and then install the aluminum strong back themselves without causing any wastage.</p>	<p>No need for costly dismantling and re-assemble of the forms during the construction of each floor.</p>	<p>1. The entirely stripping reduce the wastage of plywood and comparatively increase its life-span. Besides, there is no need of lump wood. 2. Can be moved to next floor as a whole set by tower crane quickly and safely.</p>

# Scene

Erection	Lifting	Stripping
<p>Formwork erection without crane.</p>	<p>Formwork can be lifted by tower crane.</p>	<p>Formwork can be stripped without crane.</p>
		

# Category 5

## Wall Formwork

**Sainty Forms - Professional Monolithic Formwork Manufacturer!**



## Aluminum Panel System-Tie rod Type

- Aluminum panel system is a new integrated forming and shoring system.
- It is a flexible solution for monolithic casting or two stage casting of wall, beam, slab and staircase.
- The panels are reinforced by tie rod or flat tie, which can make sure good of wall.
- The smooth concrete surface finish after stripping eliminates the need of costly plastering..

<b>Brand Name</b>	Sainty Forms	<b>Place of Origin</b>	Qingdao, China	<b>Certificate</b>	ISO9001;CE;SGS
<b>Material</b>	Aluminum Alloy 6061-T6	<b>Aluminum Thickness</b>	4mm	<b>Side Rail Thickness</b>	8mm
<b>Extrusion Profile</b>	Yes	<b>Weight</b>	25kg/sqm	<b>Reuse Times</b>	> 300 times
<b>Surface</b>	Special Coating	<b>Panel Width</b>	500mm	<b>Panel Length</b>	Customized
<b>Feature</b>	Monolithic casting	<b>Early Stripping</b>	Yes	<b>Application</b>	House, Apartment
<b>Reshore</b>	No Need	<b>Plastering</b>	No Need	<b>Plywood</b>	No Need
<b>Connection Method</b>		Use tie rod and wing nut to reinforce the panels			

## Advantages

Light Weight	Flexible Operation	More Usage times
<p>Panel material is aluminum alloy 6061-T6.</p> <p>Weight 25kg/m<sup>2</sup> makes manpower carrying possible.</p>	<p>The panel system can be lifted by tower crane in whole, or dismantled and installed by labors. It can realize casting of wall, beam, slab and staircase monolithically or in two stage casting.</p>	<p>The panel is made of extrusion profiles with high strength. It is not easily to be deformed by external force or water erosion. The panel can be used more than 300 times with appropriate usage and maintenance.</p>
Better Concrete Surface	Improve Efficiency	Save Labor Cost
<p>Main panel width 500mm makes the concrete surface more smooth and fewer joints. The verticality is better than concrete surface made by plywood or steel formworks.</p>	<p>1. Early-dismantling application improves the form cycle and save cost for users.</p> <p>2. No need re-shore.</p>	<p>1. Assembled easily with only pins &amp; wedges, tie rods &amp; wing nuts. Labors can finish the installation and dismantling by hammers.</p> <p>2. No need to plaster the concrete surface after concrete pouring.</p>

## Scene

Walls & Column Forms	Beam Forms
<p>The panel system can be used to form large walls &amp; columns where flat ties are not practical or not preferred. To ensure the strength of the system, steel waler, tie rod &amp; wing nut are used.</p>	<p>The beam formwork is designed with early-dismantling application. The shoring props work for back propping.</p>





Slab Forms

Main slab panel size 500x1200mm.  
Strength and easy handling are both satisfied. The slab is designed with decking beam, which is easier to apply early-dismantling application.



Stair Forms

Stair formworks are designed to allow walls and stairs to be poured concrete at the same time. Staircase forms without top covers can realize even faster pouring.



11、



## Sainty Wall Panel Formwork System

- Sainty wall panel formwork system is usually used to foundations, basement and storey-level walls., etc
- Mainly four height of the panels:250cm, 150cm, 125cm, 75cm. Width:100cm, 75cm, 50cm,35cm,25cm. With swivel corner panel formwork can make nearly all types of the foundation wall



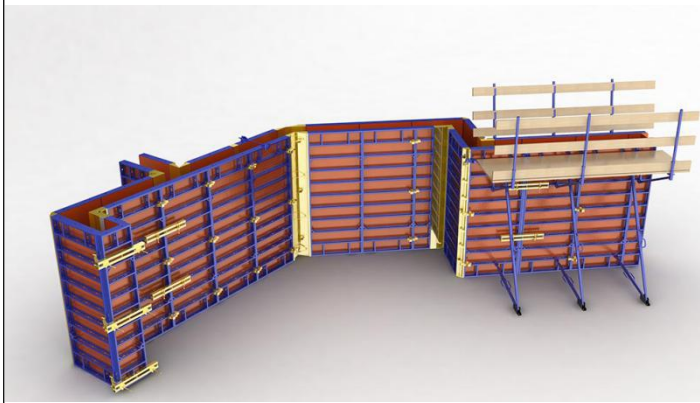
# Advantages

Lightweight	Simple	Highly Efficiency
Typical panels 250cm*100cm is less than 60kg, which is easily carried by two workers without tower crane.	The system only includes few components which is simple to assemble and strip.	Fast assembly and connection by the clamp and tie only.

# Scene

## Typical Wall Panel

The workers can assemble and strip the formwork quite simple and easy.



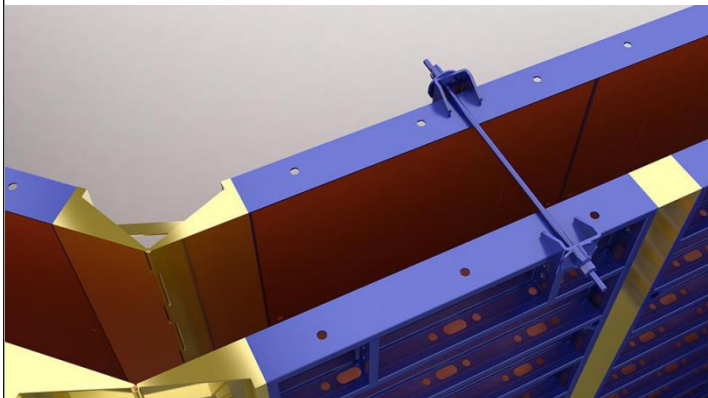
## Inset Tie Points

It makes the panels (125cm, 150cm) can be used in both a vertical and horizontal position.



## Top & Foundation Tie

Better position the panel formwork and assure the concrete surface.



## The Coupler

It helps to install the typical panels and makes the panel formwork aligned and tightened.



## The Wedge Coupler

It can be used for panel connections with low loads in the foundations as an alternative for the coupler.



三、



## Aluminum Retaining Wall System

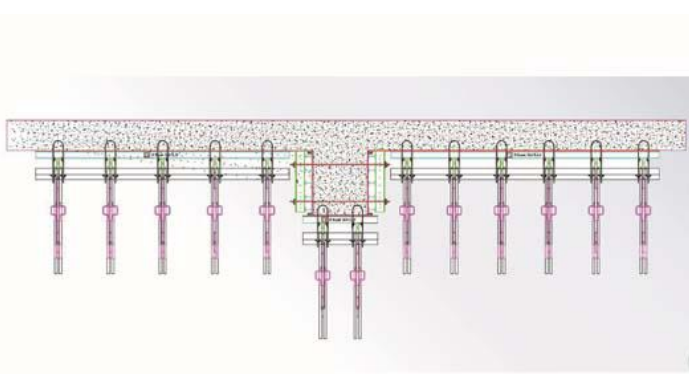
- Aluminum retaining wall formwork system (single side wall form system) is usually used to cast walls found in basement levels where in the other side is earth soil.
- Other usage are in casting underground chambers, water tanks,

# Advantages

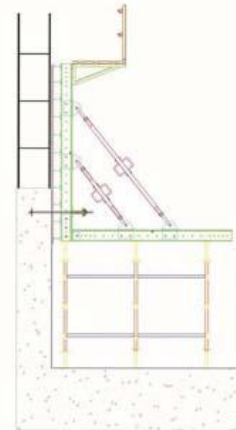
Flexible Size	Save Labor Cost	Improve Efficiency
When countered different sizes of the walls, customers just cut the plywood accordingly and then install the aluminum strong back themselves without causing any wastage.	<ol style="list-style-type: none"><li>1. The average forming cost is only 50% of the plywood.</li><li>2. Because of the whole system lifting, no small parts would get lost.</li></ol>	Customers could use tower crane to lift the whole system and no need to install and strip again and again.

## Scene

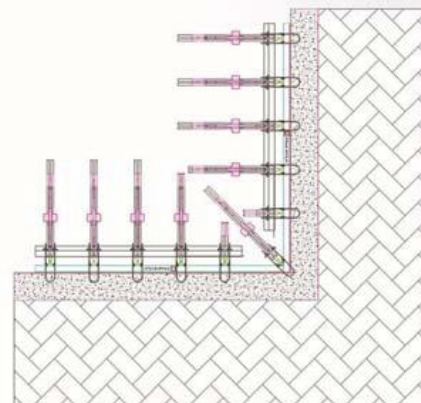
Retaining Wall Form Plan With Column



Retaining Wall Form Section Over Scaffolding

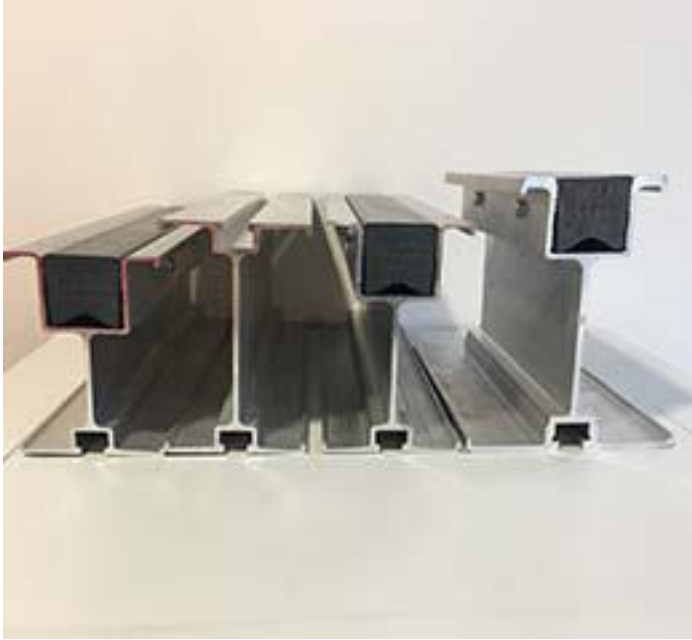


Retaining Wall Form Plan At The Corner



## Category 6

# System Components



## Aluminum Formwork Beams

- Sainty aluminum formwork beam for ledgers and joist are compatible with most of Sainty formwork systems.
- 5 types of aluminum h beam: 122 h beam, 140 h beam, 122 h beam with rubber filler, 140 h beam with rubber filler, 165 h beam with rubber filler.
- They are created and fabricated with precision and high quality standards.

## Specification

Product Name	Material	Weight	Usage
140 H beam	Aluminum 6061-T6	3.15 kg/m	ledger beam
140 H beam (with rubber filler installed)	Aluminum 6061-T6	3.16 kg/m	joist beam ledger beam
122 H beam	Aluminum 6061-T6	2.57 kg/m	ledger beam
122 H beam (with rubber filler installed)	Aluminum 6061-T6	2.68 kg/m	joist beam ledger beam
165 H beam (with rubber filler installed)	Aluminum 6061-T6	4.91 kg/m	joist beam ledger beam



# Scene

## Aluminium Formwork Beams Scene

Used as joist beam and ledger beam. Applied in our table form system, frame system, shoring prop form system.



## Shoring Prop

- Product Specification
- Material: Q235
- Surface: Painting, Powder Coating, Zinc electroplating, hot galvanized
- For more specifications, we can produce according to customer's drawing.

## Specifications as below

### Medium Duty Prop Specification

Item	Min.Height (mm)	Max.Height (mm)	Weight kg/pc	Outside tube (mm)	Inside tube (mm)
1	1800	3000	13.3	Φ60x2.5	Φ48x3.25
2	1900	3200	14		
3	2000	3400	14.7		
4	2100	3600	15.2		
5	2200	3800	15.9		
6	2300	4000	16.6		